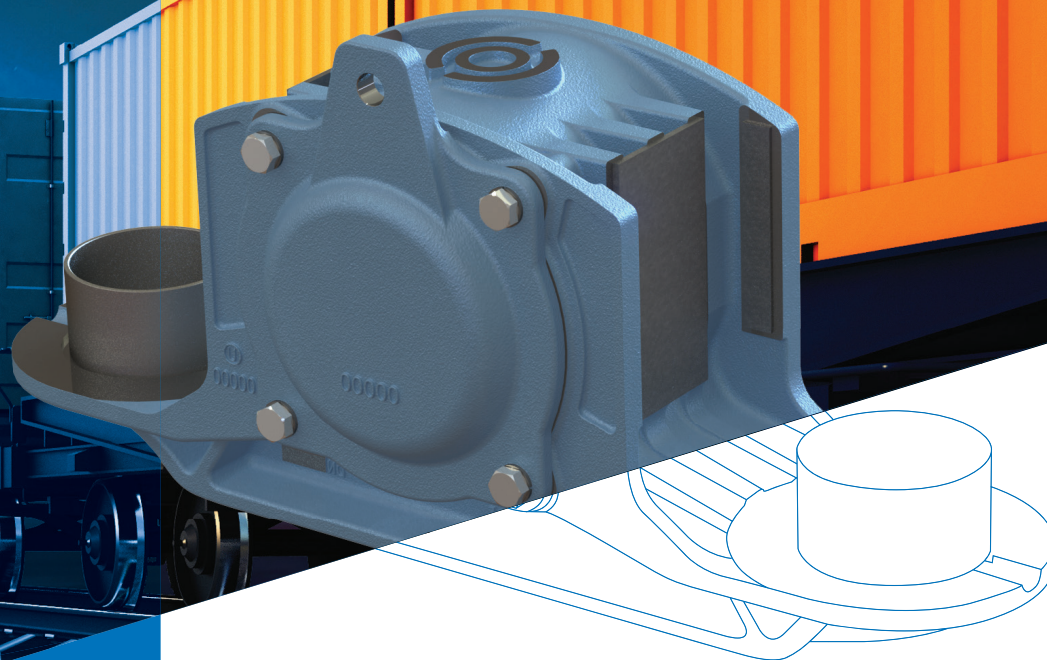


K25 - NEW GENERATION OF AXLEBOX

product specification



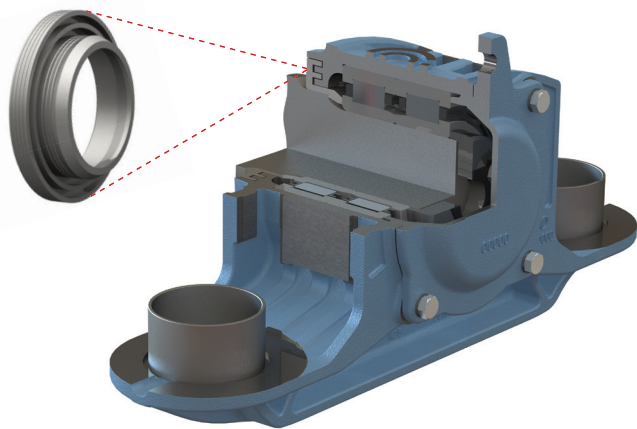
KEY FEATURES:

- 15% weight reduction
- Design compatible with standard 25 tons load axle box
- Two option of attachment of wear plates
- Glued wear plates - new attachment option
- Increased strength
- Improved seal ring as standard option

DESIGN 100% COMPATIBLE WITH STANDARD 25 TONS LOAD AXLE BOX

Kovis - the european leader in the production of components for railway vehicles, for instance brake discs, axle boxes and various parts for the railway industry or other industry sectors.

Kovis has developed novelties for freight wagons, a new 25-tonne axle box providing in excess of a fifteen percent reduction in weight, whereby the existing type BA386 box can be completely replaced by this new one.



IMPROVED SEAL RING AS STANDARD OPTION

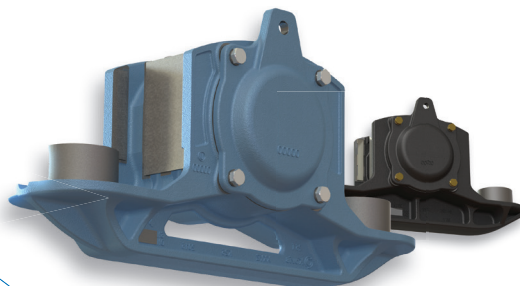
DESIGN FEATURES

- New optimized geometry (15% weight reduction)
- Increased strength
- 100% compatibility with BA 386

WEAR PLATES ATTACHMENT OPTIONS

Two options:

- Welded (classic)
- Glued (innovative, environmental, worker, budget and maintenance friendly)



B: Version 15

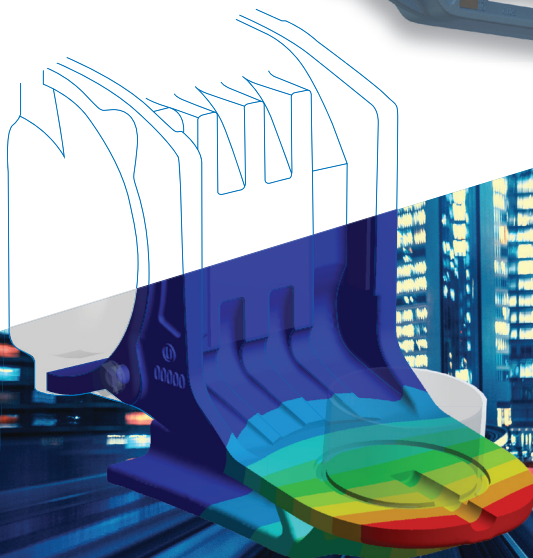
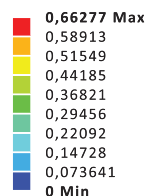
Figure

Type: Total Deformation

Unit: mm

Time: 2

8.6.2016 8:33



SAVINGS POTENTIAL:

Weight reduction
consequences:



Less energy consumption
at acceleration



Less brakes wear at braking



Environmentally friendly



100% substitution with
BA 386 box



No additional costs
for replacement



Efficient production



More favorable maintenance
and replacement

KOVIS d.o.o., Brežina 102, SI-8250 Brežice, Slovenija

+386 7 499 11 80 info@kovis-group.com

www.kovis-group.com